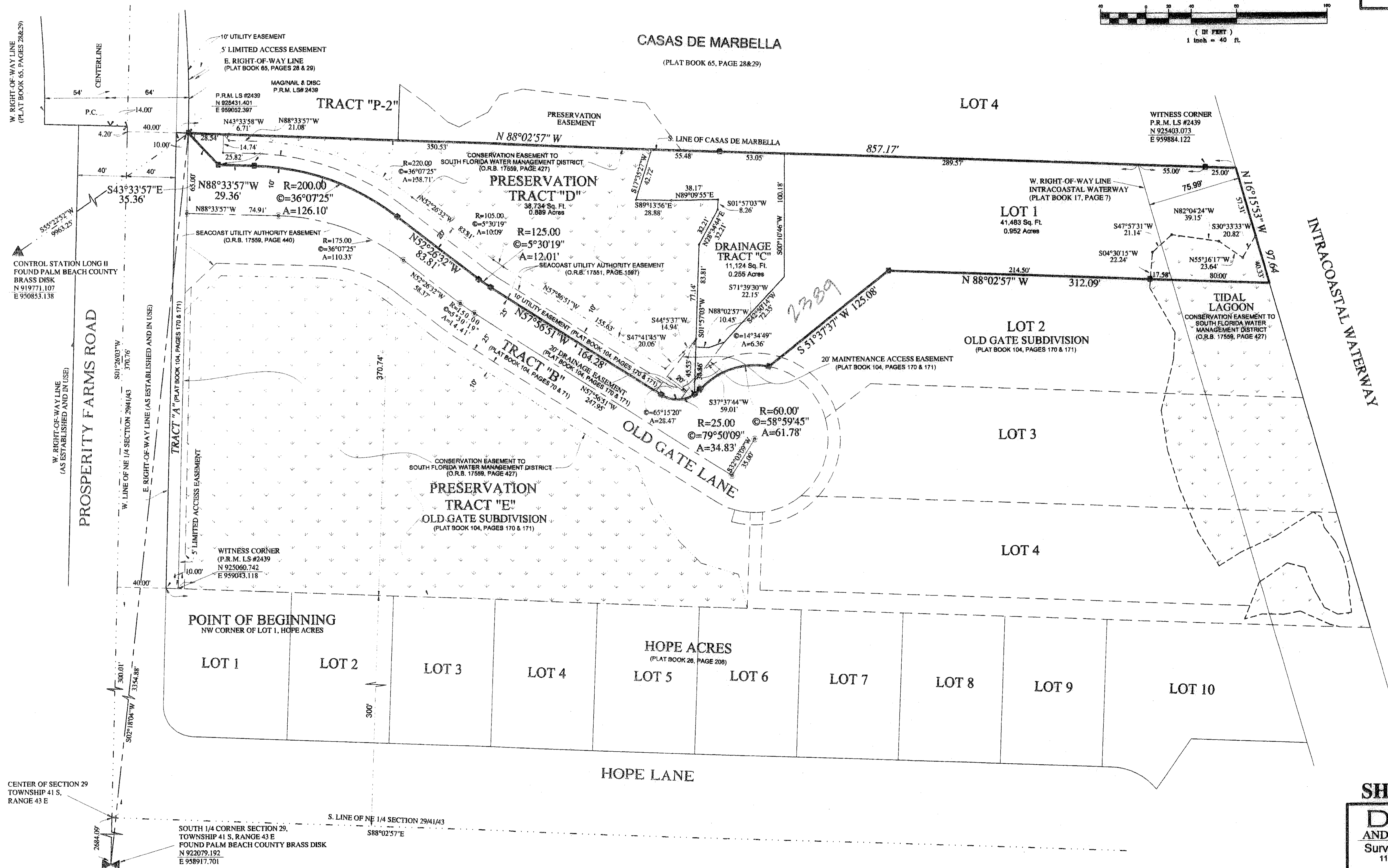
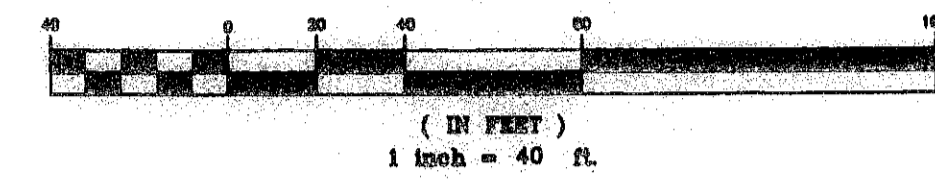


LEGEND

- 4x4 CONCRETE PERMANENT REFERENCE MONUMENT (P.R.M.) LS # 2439
- MAG/NAIL & DISC PERMANENT CONTROL POINT (P.C.P.) LS # 2439
- RADIUS
- c CENTRAL ANGLE
- A ARC DISTANCE
- L.S. LAND SURVEYOR
- O.R.B. OFFICIAL RECORD BOOK

OLD GATE SUBDIVISION, REPLAT OF LOT 1, BEING A REPLAT OF LOT 1, DRAINAGE TRACT "C" AND PRESERVATION TRACT "D", ACCORDING TO THE PLAT OF OLD GATE SUBDIVISION, AS RECORDED IN PLAT BOOK 104, PAGES 170 AND 171, AND LYING IN SECTION 29, TOWNSHIP 41 SOUTH, RANGE 43 EAST, PALM BEACH COUNTY, FLORIDA . FEBRUARY 2008

GRAPHIC SCALE



SHEET 2 OF 2

DAILEY AND ASSOCIATES, INC.
 Surveying and Mapping
 112 N. U.S. Highway No. 1
 Tequesta, FL 33469
 Phone: (561) 746-8424
 BUSINESS LICENSE: LB# 2799